

## SR 12 CSM

The robust 14 m telescopic work platform has a telescopic boom with a movable cage arm, a maximum cage load of 250 kg and a maximum lateral range of 10.70 m.



### Electrical-hydraulic proportional control

Robust and clear basket control



### Ground control system

Extensive and easy-to-use ground control

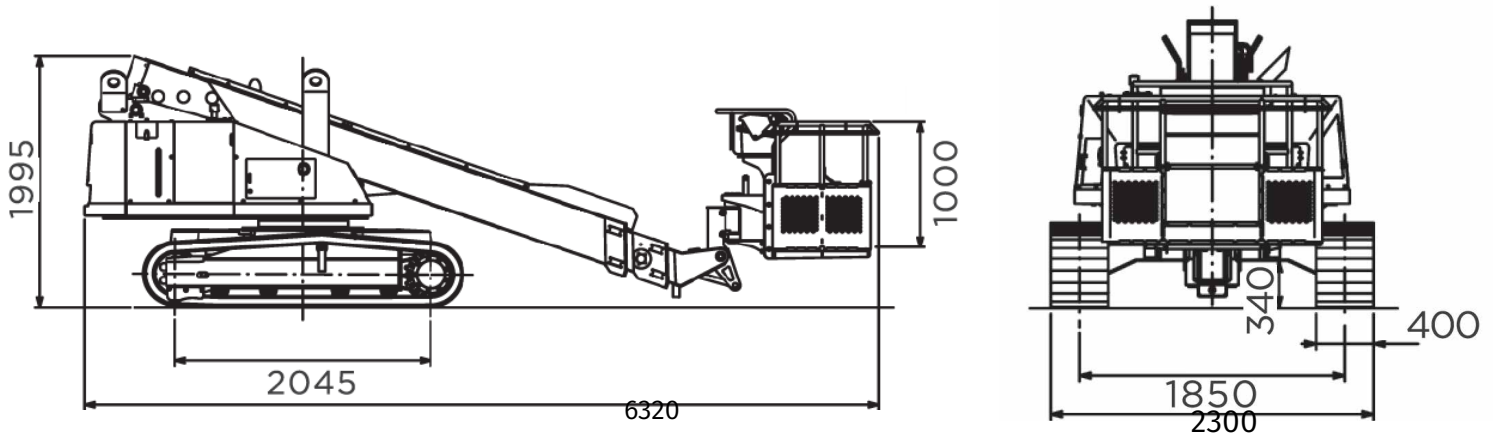


### Crawler chassis

enables driving on rough terrain.

### Technical Details

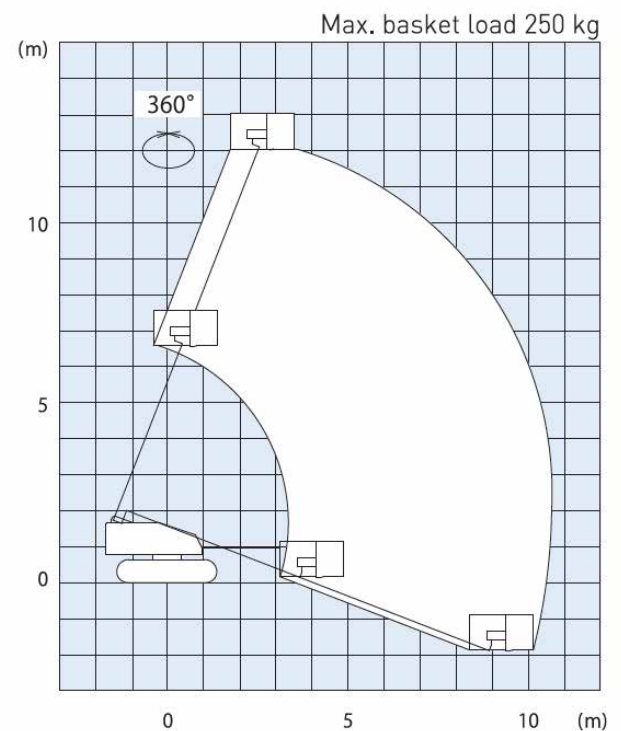
Max. Working height	14.10 m	Min. Transportation dimension L x W x H	6.32 x 2.30 x 2.00 m
Max. Lateral range	10.70 m	Total weight	7,550 kg
Basket rotation angle	+/- 90°	Max. Height during the procedure	14.10 m
Basket size L x W x H	1.80 x 0.75 x 1.11 m	Control system	Electrical-hydraulic proportional control
Max. Basket capacity	250 kg	Max. Cross slope	+/- 5°
Rotation angle	360°	Max. Gradability	30°
Engine	Yanmar Engine (diesel)	Max. Speed	1,5 km/h (0.93 mph)



## SR 12 CSM

### Technical details

Max. Working height	14.10 m
Max. Platform height	12.10 m
Max. Lateral range	10.70 m
Overhang from center of rotating tower	1.75 m
Rotation tower angle	360°
Basket rotation angle	+/- 90°
Max. basket capacity	250 kg
Basket size L x W x H	1.80 x 0.75 x 1.11 m
Min. Transportation dimension L x W x H	6.32 x 2.30 x 2.00 m
Total weight	7,550 kg
Max. Height during the procedure	14.10 m
Max. Cross slope	+/- 5°
Max. Gradability	30°
Max. Speed	1.5 km/h (0.93 mph)
Control system	Electrical-hydraulic proportional control



## Engine

Engine	Yanmar engine (diesel) 3TNV88-KASV
--------	------------------------------------

## Features

<p>Standard features:</p> <ul style="list-style-type: none"> <li>- Crawler chassis</li> <li>- Movable basket</li> <li>- 3TNV88-KASV Yanmar engine (diesel) with diesel particulate filter</li> </ul>	<p>Optional extras:</p> <ul style="list-style-type: none"> <li>- 3.5 kW Generator</li> <li>- Customized RAL painting</li> </ul>
--	---